

PRODUCT CHANGE

Change:	New mounting angles for perma lubrication systems
PCN-No.:	1206-01-00
Date:	18 June 2012

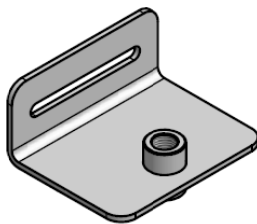
Description of Change:

There are 4 new mounting angles available.

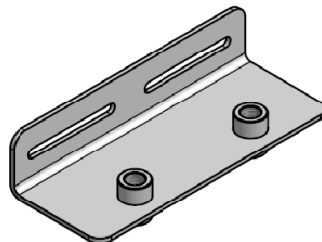
Details:

The following mounting angles were added to our product range:

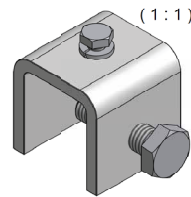
- | | |
|---|----------------------|
| 1. 1 point bracket G1/4i (stainless steel 1.4301) | Part no. 26.0012.655 |
| 2. 2 point bracket G1/4i (stainless steel 1.4301) | Part no. 26.0012.656 |
| 3. Beam clamp 30 mm (stainless steel 1.4301) | Part no. 26.0012.659 |
| 4. 1 point cage hanger for bracket G1/4i (stainless steel 1.4301) | Part no. 26.0012.660 |



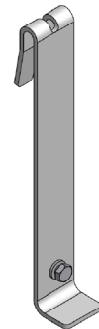
26.0012.655
1 Point bracket G1/4i



26.0012.656
2 point bracket G1/4i



26.0012.659
Beam clamp 30 mm



26.0012.660
1 point cage hanger

Products effected:

perma CLASSIC, FUTURA, FLEX, NOVA, STAR

Effective date:

Immediately

Remarks:

Drawings are available for download from our website www.perma-tec.com.

perma-tec GmbH & Co. KG

Mounting example

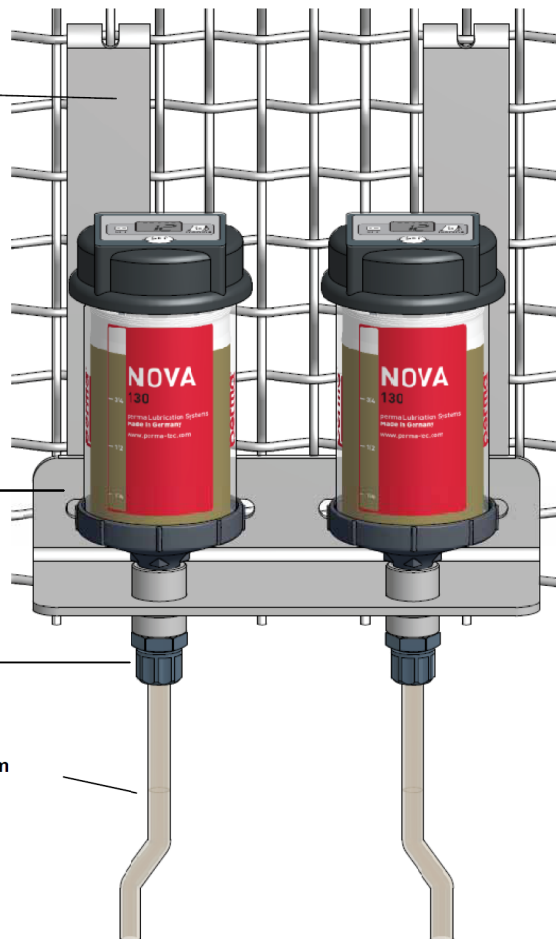
perma NOVA with cage hanger

1 point cage hanger – for bracket G1/4i
(stainless steel 1.4301)
26.0012.660

2 point bracket G1/4i (stainless steel
1.4301) 26.0012.656

Tube connector G1/4o
26.001.203

Tube (PA) up to +80°C $\text{o}\varnothing$ 8mm x $\text{i}\varnothing$ 6mm
26.001.250



The World of Automatic Lubrication

- 1 -

perma