

# perma OIL LUBRICATION WITH TUBE

## Installation examples

perma STAR VARIO /  
perma STAR CONTROL  
max. 5 m\*

All metal to metal connections must be glued together with Loctite® 243™ (Art. No. 110278).



perma NOVA  
max. 2 m\*



perma FLEX  
perma FLEX PLUS  
max. 2 m\*



perma FUTURA  
perma FUTURA PLUS  
max. 1 m\*



perma CLASSIC  
max. 1 m\*



Art. No.  
109420



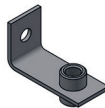
Art. No.  
101427



Art. No.  
104862

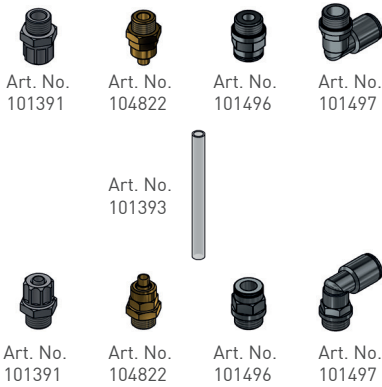


Art. No.  
109663



Art. No.  
109685

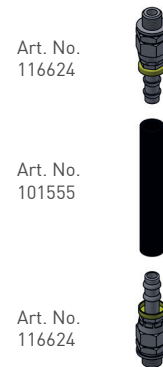
< +80 °C



< +260 °C



< +100 °C



< +260 °C



Art. No.  
104864



Art. No.  
104862



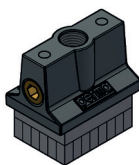
Art. No.  
104889



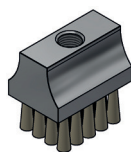
Art. No.  
104863



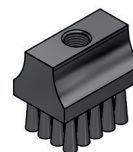
Art. No.  
101396



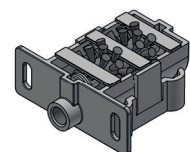
Art. No.  
117435



Art. No.  
101402



Art. No.  
101405



Art. No.  
101445

\* depending on lubricant and ambient temperature

## Accessories

Art. No.	Description
----------	-------------

### Support flanges

101427	Support flange FLEX G1/4 male x G1/4 female (brass / plastic)
109420	Support flange STAR G1/4 male x G1/4 female (brass / plastic)

### Mounting Brackets

109685	Mounting Bracket CLASSIC, FUTURA, FLEX, NOVA 1-point G1/4 female (stainless steel)
109663	Mounting Bracket STAR Standard Duty 1-point G1/4 female (stainless steel)

### Tube up +80 °C

101393	Tube up to +80 °C oØ 8 mm x iØ 6 mm (PA)
101391	Tube connector G1/4 male for tube oØ 8 mm (alu / plastic)
104822	Tube connector G1/4 male for tube oØ 8 mm (brass)
101496	Tube connector G1/4 male for tube oØ 8 mm straight (brass nickel-plated)
101497	Tube connector G1/4 male for tube oØ 8 mm 90° - rotary type (brass nickel-plated)

### Tube up to +260 °C

101394	Tube up to +260 °C oØ 8 mm x iØ 6 mm (PTFE)
104867	Tube connector G1/4 male for tube oØ 8 mm (stainless steel)

### Heavy Duty hose up to +100 °C

101555	Heavy Duty hose up to +100 °C oØ 16 mm x iØ 9.5 mm (with NBR lining and fabric insert)
116624	Hose connector G1/4 male for hose iØ 9.5 mm - push-lock (steel, zinc-plated)

### Tube up to +260 °C

113864	Tube up to +260 °C oØ 11 mm x iØ 8 mm 500 mm (PTFE / stainless steel)
101549	Tube up to +260 °C oØ 11 mm x iØ 8 mm 1000 mm (PTFE / stainless steel)
101550	Tube up to +260 °C oØ 11 mm x iØ 8 mm 1500 mm (PTFE / stainless steel)
104868	Cutting ring coupling R1/4 male for oØ 8 mm straight (stainless steel)

### Oil retaining valves

104862	Oil retaining valve G1/4 male x G1/4 female up to +60 °C (brass with plastic valve)
104889	Oil retaining valve G1/4 male x G1/4 female up to +60 °C (stainless steel with plastic valve)
104863	Oil retaining valve G1/4 male x G1/4 female up to +150 °C (brass with metal valve)
104864	Bracket (stainless steel)

### Oil brushes

101396	Oil brush Ø20 mm G1/4 female
117435	Oil brush foam up to +80 °C 40 x 30 mm G1/4 female thread on top + lateral thread
117436	Oil brush foam up to +80 °C 60 x 30 mm G1/4 female thread on top + lateral thread
117437	Oil brush foam up to +80 °C 100 x 30 mm G1/4 female thread on top + lateral thread
101402	Oil brush up to +180 °C 40 x 30 mm G1/4 female thread on top
101403	Oil brush up to +180 °C 60 x 30 mm G1/4 female thread on top
101404	Oil brush up to +180 °C 100 x 30 mm G1/4 female thread on top
101405	Oil brush up to +350 °C 40 x 30 mm G1/4 female thread on top
101406	Oil brush up to +350 °C 60 x 30 mm G1/4 female thread on top
101407	Oil brush up to +350 °C 100 x 30 mm G1/4 female thread on top

### Chain lubrication box

101445	Multipurpose chain lubrication box (plastic)
--------	--

For more connecting parts please see our perma catalog at [www.perma-tec.com](http://www.perma-tec.com)