

# ASPHALT MIXING PLANTS

perma lubrication systems in operation



The Expert in Lubrication Solutions

**perma**

## Challenges

Complex procedures are required to process mineral rock, rock dust, binder (bitumen) and additives into an asphalt mixture.

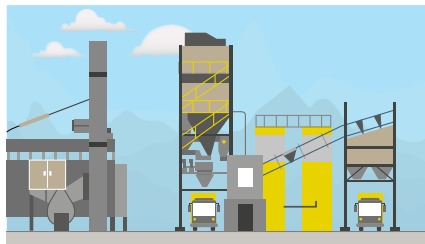
There are numerous safety aspects to observe and great challenges for man and machine in the production process. Fluctuating temperatures and dirt and dust need to be handled. Continuous lubrication of machine elements is a key factor in preventing machine breakdowns and ensuring high productivity for the whole system.

- Dust, dirt and vibration
- Varying temperatures
- High energy costs
- Different lubrication points require different lubricants and lubricant amounts
- Hard-to-reach lubrication points
- Rotating machine parts hazard



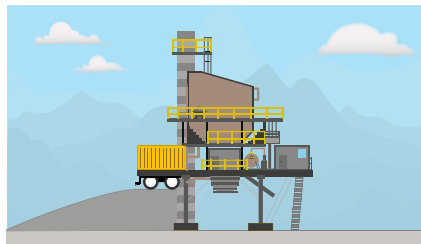
## Lubrication points

### 1 | RAW MATERIAL PROCESSING



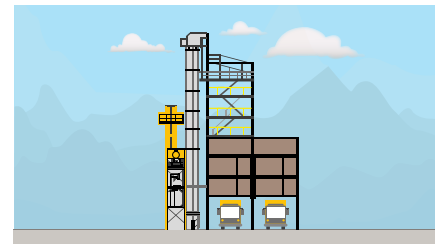
- **Pre-dosage**  
Metering devices & conveyors
- **Drying**  
Drum driers
- **Transporting**  
Bucket conveyor & elevator

### 2 | FINAL PROCESSING & LOADING



- **Weighing**  
Mineral flaps
- **Mixed module**  
Mixing shafts & mixer flaps
- **Loading**  
Concrete travelling buckets & loading flaps

### 3 | DEDUSTING



- **Filtering**  
Exhauster & trough screw conveyor
- **Conveying**  
Screw conveyor



Roller bearing lubrication on conveyors



Lubrication of mixing shafts and mixer flaps



Pillow block lubrication on an exhauster



Lubrication on a parallel drum



Flange bearing lubrication on a trough screw conveyor (dedusting)



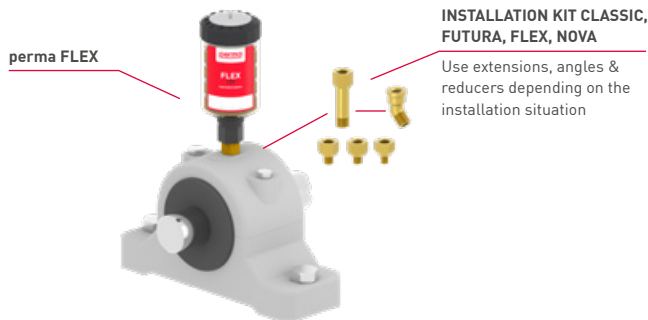
Roller bearing lubrication on a filler elevator

## Solutions

The selection of the ideal lubrication solution requires the consideration of various factors, including the specific type of application, operating speed and load of the machine, and the ambient temperature. Below are some proposed solutions:

### Direct mounting | e.g. with perma FLEX

- Easy, quick mounting
- For lubrication points with little vibration | shocks
- For easy-to-reach and safe lubrication points



### Remote mounting | e.g. with perma STAR VARIO

- For lubrication points with strong vibration | shocks (isolation of lubrication system)
- When workers' safety is at risk: Mounting in safe areas
- For hard-to-reach lubrication points



## perma SERVICES

You have questions about our products or need assistance with measurement, system installation and maintenance of your equipment? The perma Services team has answers and is happy to assist!



Visit the perma website for an overview of our offerings.



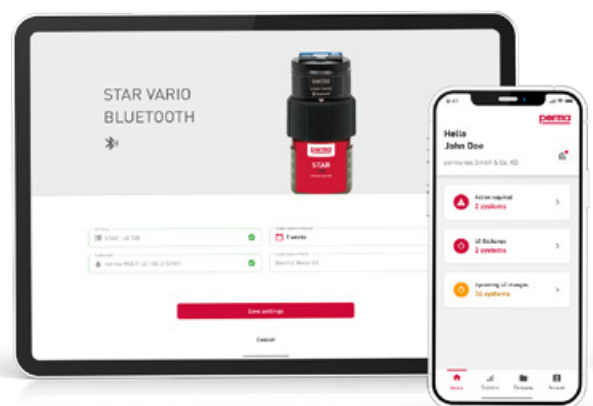
# EASY. SMART. CONNECTED.

Create your own network

- Current overview of all lubrication points
- Coordination of upcoming maintenance work
- Reminders for pending exchanges
- Central management of lubrication points in the web application
- Recording of all on site maintenance and exchange tasks via the app

Get perma CONNECT now!

Download the app to your smartphone or open the web application at <https://perma-connect.com>



Find a variety of videos on the perma YouTube channel to get a deeper understanding of the perma CONNECT app.



**perma-tec GmbH & Co. KG**  
Hammelburger Str. 21  
97717 Euerdorf  
GERMANY

Tel.: +49 9704 609 - 0  
[info@perma-tec.com](mailto:info@perma-tec.com)  
[www.perma-tec.com](http://www.perma-tec.com)